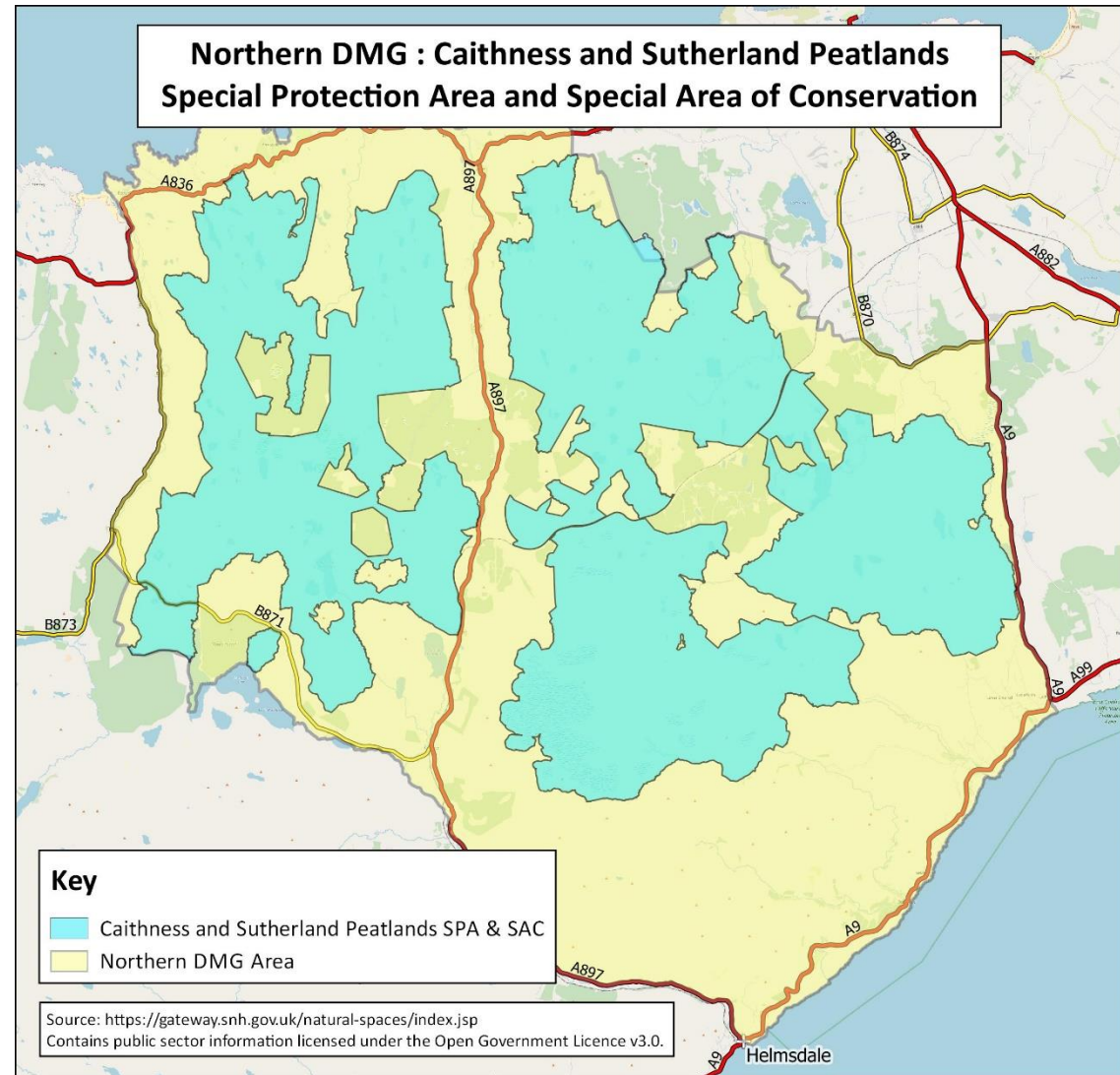


Special Protection Areas (SPAs) and Special Areas of Conservation (SACs) within Northern Deer Management Group

Part of the Caithness and Sutherland Peatlands lie within the Northern DMG area. The map (right) shows the location of the peatlands.

These peatlands have been designated a Special Protection Area (SPA) for twelve breeding bird species and a Special Area of Conservation for six habitats, one plant and one mammal species.

The tables on the following page list the features and their conditions at the latest assessments.



Caithness and Sutherland Peatlands Special Protection Area - Features Condition as at April 2019

Site Link	Site Name	Designation	Feature Name	Feature Category	Summary Condition	Latest Assessed Condition	Latest Assessed Visit Date
8476	Caithness and Sutherland Peatlands	SPA	Black-throated diver (<i>Gavia arctica</i>), breeding	Birds	Favourable	Favourable Maintained	07/06/2018
8476	Caithness and Sutherland Peatlands	SPA	Common scoter (<i>Melanitta nigra</i>), breeding	Birds	Unfavourable	Unfavourable Declining	03/06/2013
8476	Caithness and Sutherland Peatlands	SPA	Dunlin (<i>Calidris alpina schinzii</i>), breeding	Birds	Favourable	Favourable Maintained	30/06/2015
8476	Caithness and Sutherland Peatlands	SPA	Golden eagle (<i>Aquila chrysaetos</i>), breeding	Birds	Favourable	Favourable Maintained	31/08/2016
8476	Caithness and Sutherland Peatlands	SPA	Golden plover (<i>Pluvialis apricaria</i>), breeding	Birds	Favourable	Favourable Recovered	30/06/2015
8476	Caithness and Sutherland Peatlands	SPA	Greenshank (<i>Tringa nebularia</i>), breeding	Birds	Favourable	Favourable Maintained	30/06/2015
8476	Caithness and Sutherland Peatlands	SPA	Hen harrier (<i>Circus cyaneus</i>), breeding	Birds	Favourable	Favourable Maintained	21/06/2016
8476	Caithness and Sutherland Peatlands	SPA	Merlin (<i>Falco columbarius</i>), breeding	Birds	Favourable	Favourable Maintained	31/07/2004
8476	Caithness and Sutherland Peatlands	SPA	Red-throated diver (<i>Gavia stellata</i>), breeding	Birds	Favourable	Favourable Maintained	31/07/2006
8476	Caithness and Sutherland Peatlands	SPA	Short-eared owl (<i>Asio flammeus</i>), breeding	Birds	Not Assessed		
8476	Caithness and Sutherland Peatlands	SPA	Wigeon (<i>Anas penelope</i>), breeding	Birds	Favourable	Favourable Maintained	08/06/2018
8476	Caithness and Sutherland Peatlands	SPA	Wood sandpiper (<i>Tringa glareola</i>), breeding	Birds	Favourable	Favourable Maintained	30/06/2004

Source: Scotland's Environment – Feature Condition <https://www.environment.gov.scot/data/data-analysis/protected-nature-sites/?pagenumber=1&resetmap=true&siteid=8476>

Caithness and Sutherland Peatlands Special Area of Conservation - Features Condition as at April 2019

Site Link	Site Name	Designation	Feature Name	Feature Category	Summary Condition	Latest Assessed Condition	Latest Assessed Visit Date
8218	Caithness and Sutherland Peatlands	SAC	Acid peat-stained lakes and ponds	Freshwater habitats	Favourable	Favourable Maintained	04/08/2004
8218	Caithness and Sutherland Peatlands	SAC	Blanket bog	Upland habitat	Unfavourable	Unfavourable No change	08/06/2017
8218	Caithness and Sutherland Peatlands	SAC	Clear-water lakes or lochs with aquatic vegetation and poor to moderate nutrient levels	Freshwater habitats	Unfavourable	Unfavourable Declining	16/08/2015
8218	Caithness and Sutherland Peatlands	SAC	Depressions on peat substrates	Upland habitat	Unfavourable	Unfavourable No change	08/06/2017
8218	Caithness and Sutherland Peatlands	SAC	Marsh saxifrage (<i>Saxifraga hirculus</i>)	Vascular plants	Favourable	Favourable Maintained	24/08/2007
8218	Caithness and Sutherland Peatlands	SAC	Otter (<i>Lutra lutra</i>)	Mammals (except marine)	Unfavourable	Unfavourable Declining	09/09/2011
8218	Caithness and Sutherland Peatlands	SAC	Very wet mires often identified by an unstable 'quaking' surface	Upland habitat	Favourable	Favourable Declining	08/06/2017
8218	Caithness and Sutherland Peatlands	SAC	Wet heathland with cross-leaved heath	Upland habitat	Unfavourable	Unfavourable No change	08/06/2017

Source: Scotland's Environment – Feature Condition <https://www.environment.gov.scot/data/data-analysis/protected-nature-sites/?pagenumber=1&resetmap=true&siteid=8218>